



Professionals in Human Machine Interface

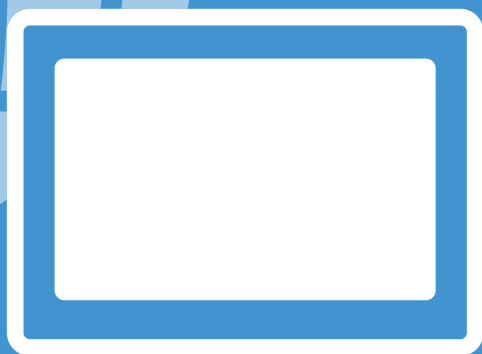
TEL: +886-2-22286770

FAX: +886-2-22286771

9F., 910 Zhongzheng Rd., Zhonghe Dist., New Taipei City 23586, Taiwan



Viewing the machine's
operational status with USB camera

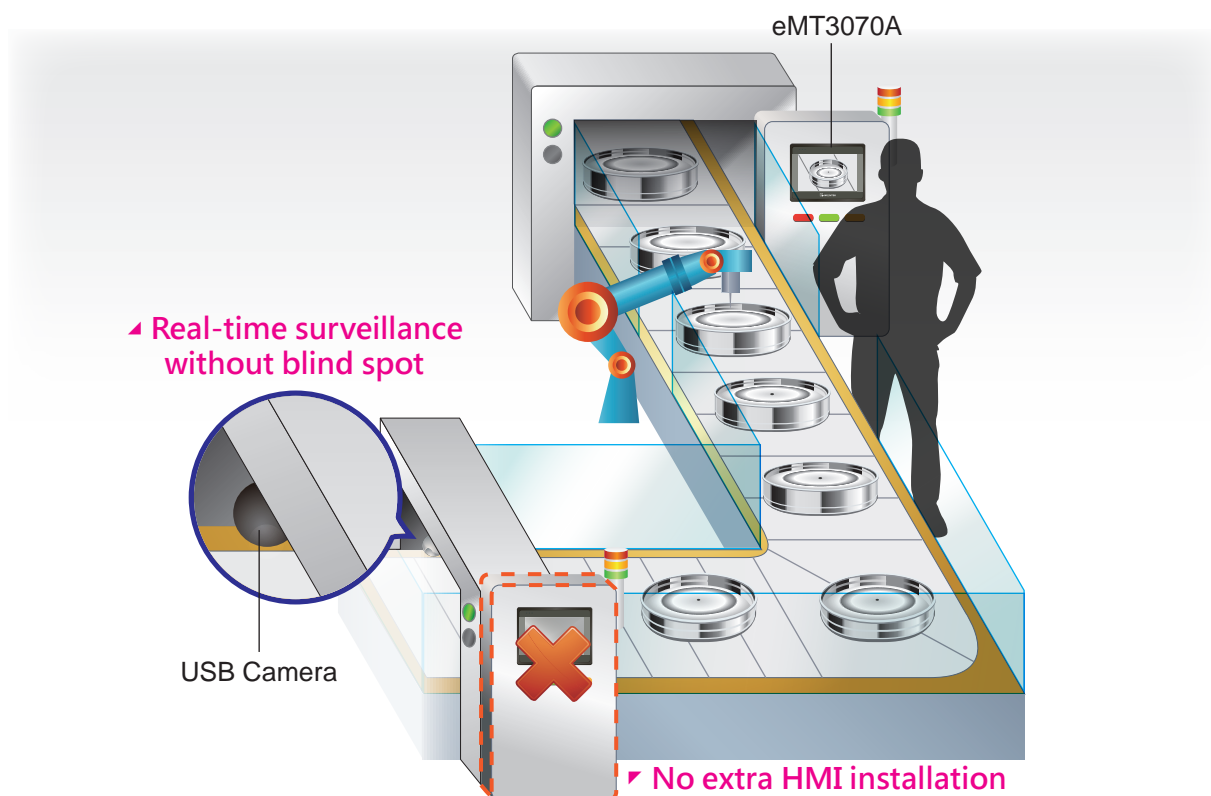


Introduction

When the machine is in operation, it is quite common that the operator shall watch the HMI screen and the machine's operational status simultaneously. However, due to viewing angle restrictions and safety regulations, in some work environments, it is impossible to watch both at the same time.

The new features of Weintek HMI resolve the problems. The HMI can connect to a USB camera and display live images on the same screen with live data, animation, trends, and control elements. It is more safe and efficient to control and monitor the machine's operational status.

■ Breaks up restrictions when operating HMI



■ Features

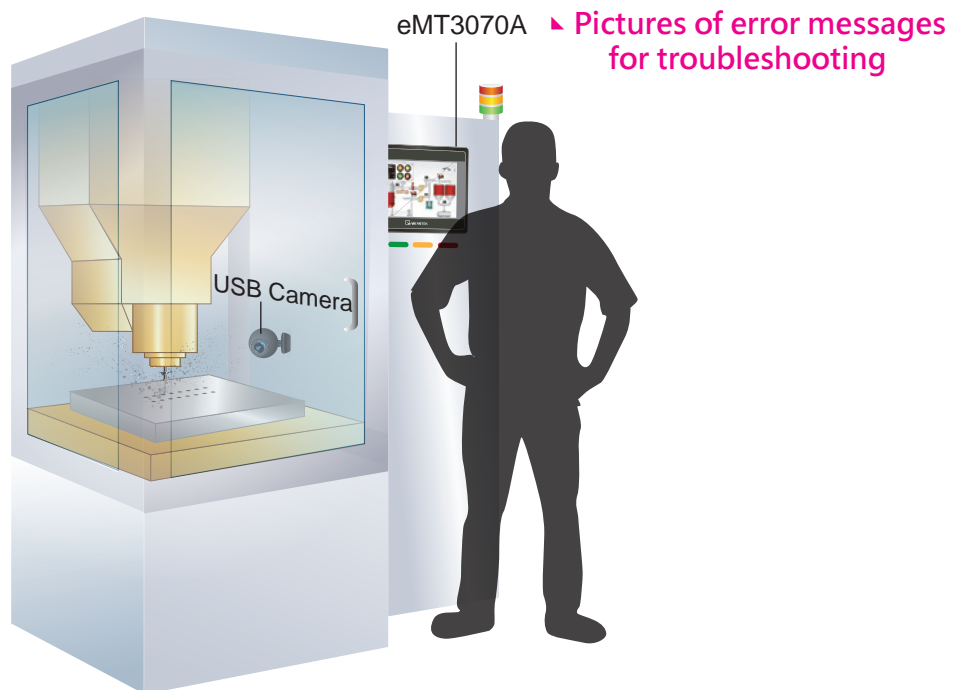
● Screen Capture

When the machine encounters an error status, the HMI can issue a command to take a snapshot from the USB camera which records the pictures in error conditions and saves them in a SD card or USB drive. It can also send an email to notify the relevant personnel who is in charge for troubleshooting.

● Instant Monitoring

The USB camera allows you to instantly monitor the operational status of the machine with your HMI. Due to safety regulations, some machines require their doors closed during the operation, thus, the USB camera can be installed inside of the machine without breaking safety regulations.

- Instant Monitoring the operational status of the machine



- Supported Software: EasyBuilder Pro 4.10.01 or later versions